

**INSTRUMENT  
APPROACH  
CHART - ICAO**

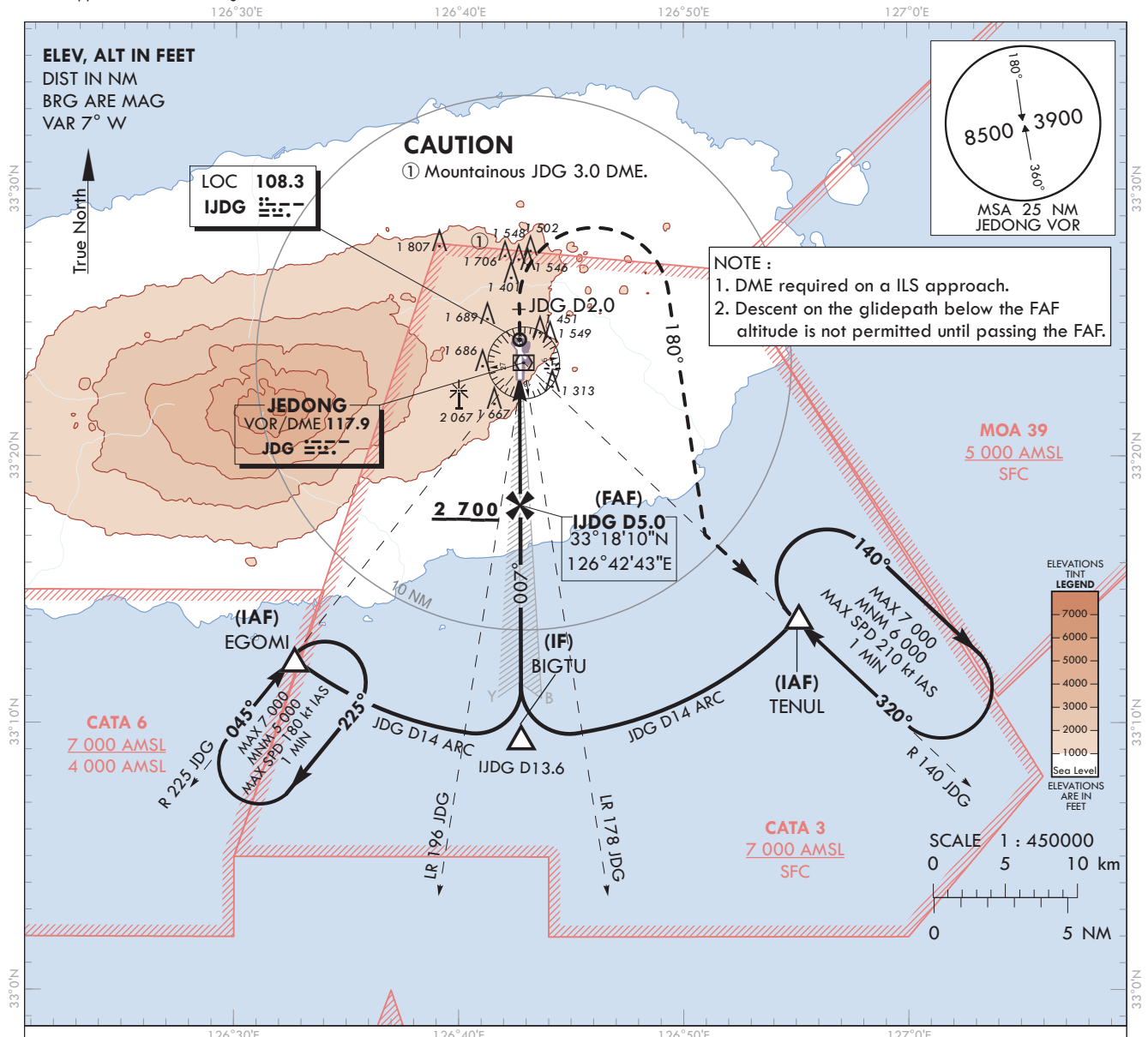
**AERODROME ELEV 1 174 ft**  
HEIGHTS RELATED TO  
THR RWY 01 - ELEV 1 102 ft

JEJU APP 121.2  
124.05  
JEONGSEOK TWR 124.35

**JEJU/Jeongseok(RKPD)**

**ILS RWY 01**

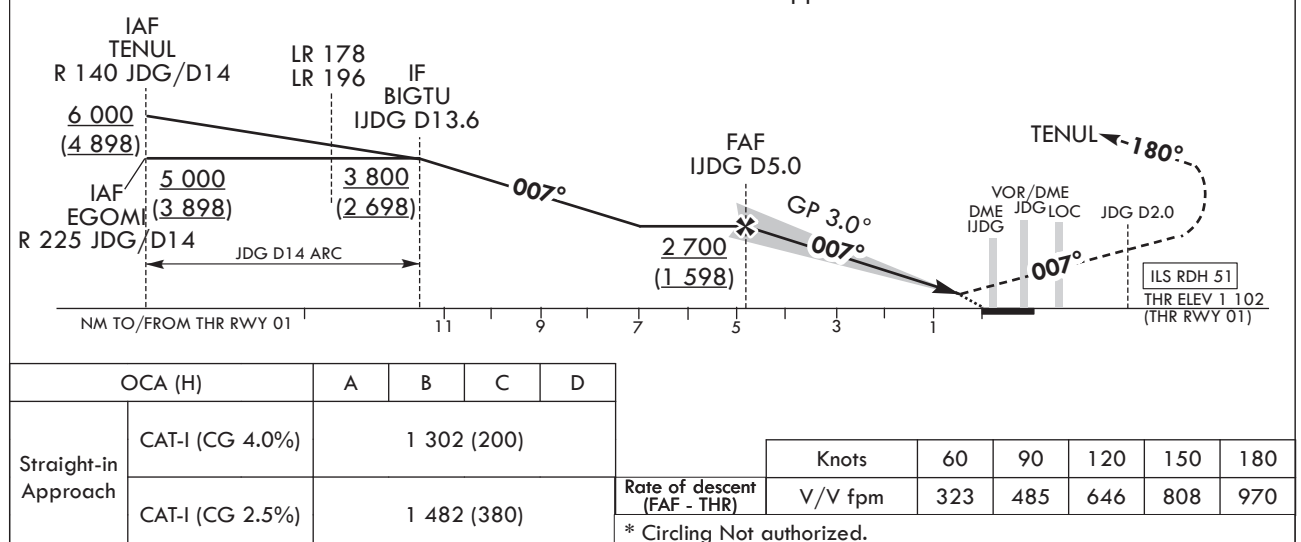
Note : Approach under ICAO Flight Procedures.



**TRANSITION ALT 14 000**  
**TRANSITION LVL FL 140**

**MISSED APPROACH**

Climb straight ahead until JDG D2.0,  
turn right HDG180° to intercept R 140 JDG,  
then proceed to TENUL 6 000 ft and hold.  
Missed approach turn limited to 210 kt IAS maximum.



Change : Page control.

**OFFICE OF CIVIL AVIATION**

**AIRAC AIP AMDT 11/24**  
**Effective : 1600UTC 25 DEC 2024**

JEJU/Jeongseok(RKPD)  
ILS RWY 01

## AERONAUTICAL DATA TABULATION

| ILS approach to RWY 01 from TENUL, EGOMI |                           |                              |
|--|---------------------------|------------------------------|
| Fix/point                                |                           | Coordinates                  |
| TENUL(IAF)                               | R 140 JDG/14.00 NM        | 33°14'01.6"N 126°55'08.7"E   |
| EGOMI(IAF)                               | R 225 JDG/14.00 NM        | 33°12'24.7"N 126°32'40.7"E   |
| BIGTU(IF)                                | BRG 187.12°/13.60 NM IJDG | 33°09'30.3"N 126°42'46.3"E   |
| D5.0 IJDG (FAF)                          | BRG 187.12°/4.95 NM IJDG  | 33°18'10.2"N 126°42'43.3"E   |
| THR RWY01                                |                           | 33°22'58.36"N 126°42'41.71"E |
| IJDG LOC                                 |                           | 33°24'22.7"N 126°42'41.2"E   |
| IJDG DME                                 |                           | 33°23'07.8"N 126°42'46.5"E   |
| D2.0 JDG(MATF)                           | 2.00 NM JDG               | 33°25'31.7"N 126°42'40.8"E   |
| TENUL(MAHF)                              | R 140 JDG/14.00NM         | 33°14'01.6"N 126°55'08.7"E   |

Change : Page control.



JEJU/Jeongseok(RKPD)  
LOC RWY 01

## AERONAUTICAL DATA TABULATION

| LOC approach to RWY 01 from TENUL, EGOMI |                           |                              |
|--|---------------------------|------------------------------|
| Fix/point                                |                           | Coordinates                  |
| TENUL(IAF)                               | R 140 JDG/14.00 NM        | 33°14'01.6"N 126°55'08.7"E   |
| EGOMI(IAF)                               | R 225 JDG/14.00 NM        | 33°12'24.7"N 126°32'40.7"E   |
| BIGTU(IF)                                | BRG 187.12°/13.60 NM IJDG | 33°09'30.3"N 126°42'46.3"E   |
| D5.0 IJDG (FAF)                          | BRG 187.12°/4.95 NM IJDG  | 33°18'10.2"N 126°42'43.3"E   |
| D1.7 IJDG (MAPt)                         | BRG 187.12°/1.70 NM IJDG  | 33°21'25.6"N 126°42'42.2"E   |
| THR RWY01                                |                           | 33°22'58.36"N 126°42'41.71"E |
| IJDG LOC                                 |                           | 33°24'22.7"N 126°42'41.2"E   |
| IJDG DME                                 |                           | 33°23'07.8"N 126°42'46.5"E   |
| D2.0 JDG(MATF)                           | 2.00 NM JDG               | 33°25'31.7"N 126°42'40.8"E   |
| TENUL(MAHF)                              | R 140 JDG/14.00 NM        | 33°14'01.6"N 126°55'08.7"E   |

**INSTRUMENT  
APPROACH  
CHART - ICAO**

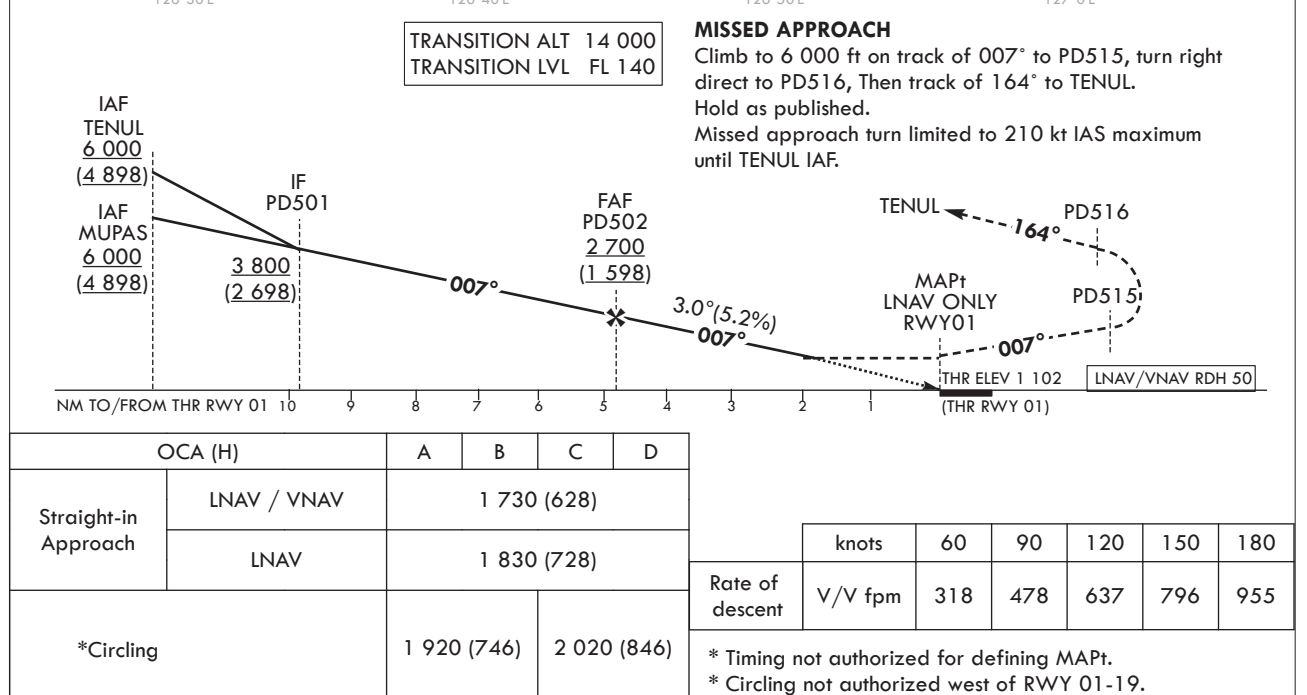
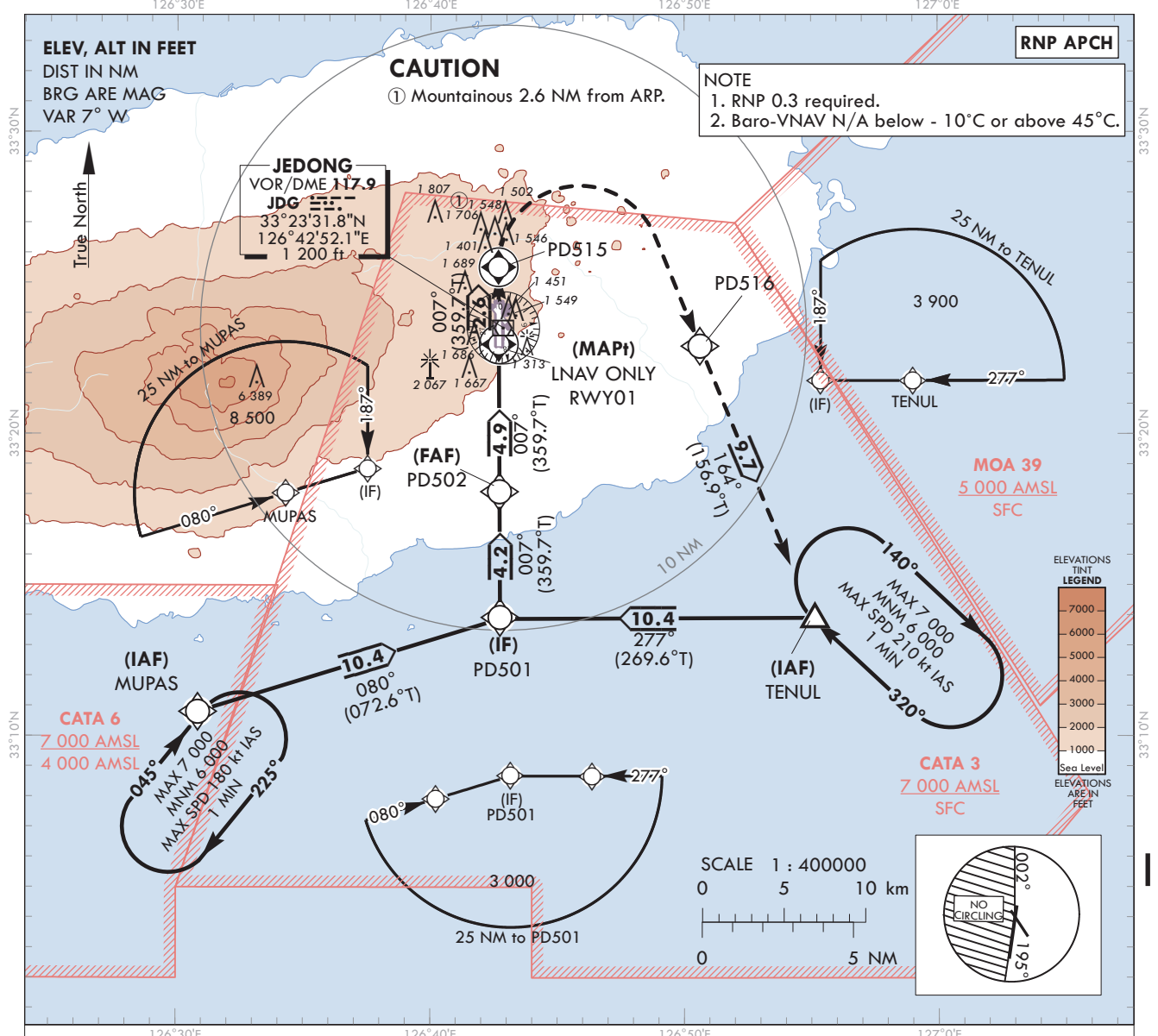
**AERODROME ELEV 1 174 ft**  
HEIGHTS RELATED TO  
THR RWY 01 - ELEV 1 102 ft

JEJU APP 121.2  
124.05  
JEONGSEOK TWR 124.35

**JEJU/Jeongseok(RKPD)**

Note : Approach under ICAO Flight Procedures.

**RNP RWY 01**



Change : Amended radial for no circling area(001° → 002°).

## AERONAUTICAL DATA TABULATION

## Instrument Approach Procedure Coding Tables

## RNP RWY01 - via TENUL to PD501(IF)

| Serial Number | Path Descriptor | Waypoint Identifier | Fly-over | Course/Track<br>M(°T) | Distance<br>(NM) | Turn direction | Altitude<br>(ft) | Speed<br>(kt) | Coordinates                | VPA/<br>RDH | Navigation specification | Remarks |
|---------------|-----------------|---------------------|----------|-----------------------|------------------|----------------|------------------|---------------|----------------------------|-------------|--------------------------|---------|
| 001           | IF              | TENUL               | -        | -                     | -                | -              | +6 000           | -             | 33°14'01.6"N 126°55'08.7"E | -           | RNP APCH                 | IAF     |
| 002           | TF              | PD501               | -        | 277(269.6)            | 10.4             | -              | +3 800           | -             | 33°13'56.3"N 126°42'44.8"E | -           | RNP APCH                 | IF      |

## RNP RWY01 - via MUPAS to PD501(IF)

| Serial Number | Path Descriptor | Waypoint Identifier | Fly-over | Course/Track<br>M(°T) | Distance<br>(NM) | Turn direction | Altitude<br>(ft) | Speed<br>(kt) | Coordinates                | VPA/<br>RDH | Navigation specification | Remarks |
|---------------|-----------------|---------------------|----------|-----------------------|------------------|----------------|------------------|---------------|----------------------------|-------------|--------------------------|---------|
| 001           | IF              | MUPAS               | -        | -                     | -                | -              | +6 000           | -             | 33°10'49.1"N 126°30'51.5"E | -           | RNP APCH                 | IAF     |
| 002           | TF              | PD501               | -        | 080(072.6)            | 10.4             | -              | +3 800           | -             | 33°13'56.3"N 126°42'44.8"E | -           | RNP APCH                 | IF      |

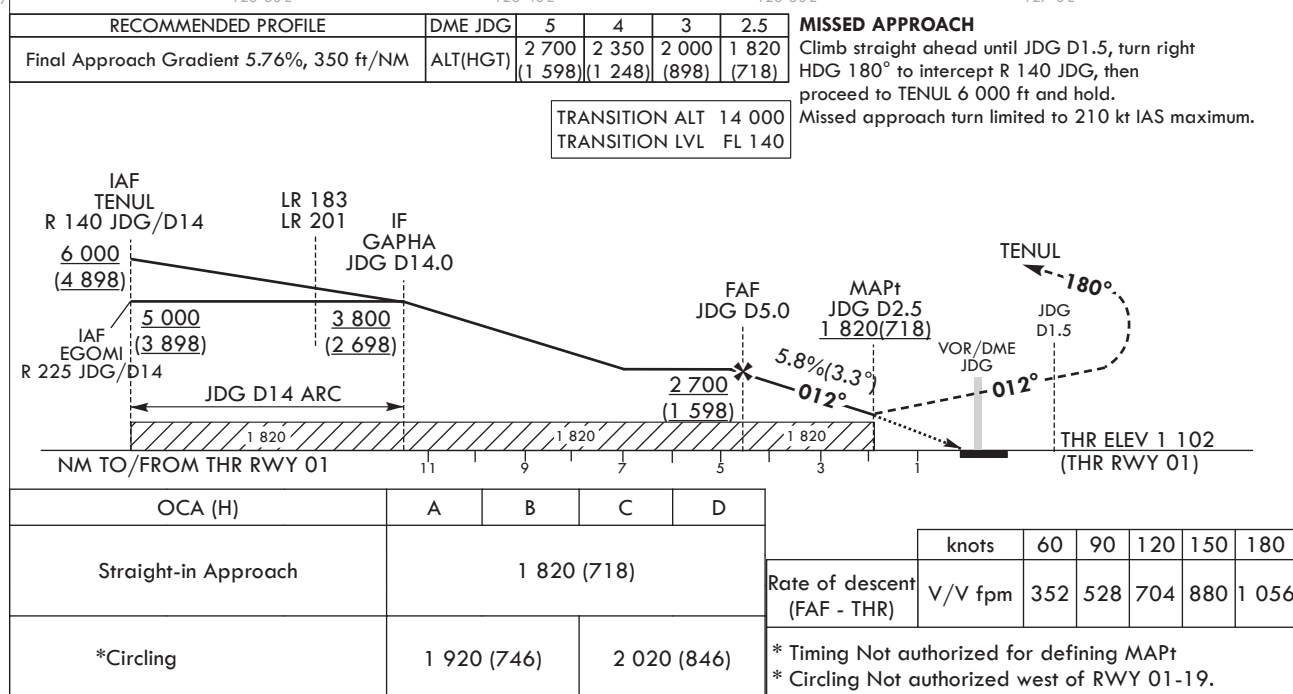
## RNP RWY01 - via PD501(IF) to MAHF

| Serial Number | Path Descriptor | Waypoint Identifier | Fly-over | Course/Track<br>M(°T) | Distance<br>(NM) | Turn direction | Altitude<br>(ft) | Speed<br>(kt) | Coordinates                | VPA/<br>RDH | Navigation specification | Remarks            |
|---------------|-----------------|---------------------|----------|-----------------------|------------------|----------------|------------------|---------------|----------------------------|-------------|--------------------------|--------------------|
| 002           | TF              | PD501               | -        | -                     | -                | -              | +3 800           | -             | 33°13'56.3"N 126°42'44.8"E | -           | RNP APCH                 | IF                 |
| 003           | TF              | PD502               | -        | 007(359.7)            | 4.2              | -              | +2 700           | -             | 33°18'06.1"N 126°42'43.4"E | -           | RNP APCH                 | FAF                |
| 004           | TF              | RWY01               | Y        | 007(359.7)            | 4.9              | -              | +1 830           | -             | 33°22'58.4"N 126°42'41.7"E | 3.00/50     | RNP APCH                 | MAPt               |
| 005           | TF              | PD515               | Y        | 007(359.7)            | 2.6              | -              | -                | -210          | 33°25'31.7"N 126°42'40.8"E | -           | RNP APCH                 | -                  |
| 006           | DF              | PD516               | -        | -                     | -                | R              | -                | -210          | 33°22'55.2"N 126°50'37.5"E | -           | RNP APCH                 | -                  |
| 007           | TF              | TENUL               | Y        | 164(156.9)            | 9.7              | -              | -                | -210          | 33°14'01.6"N 126°55'08.7"E | -           | RNP APCH                 | Outbound time 1min |
| 008           | HM              | TENUL               | Y        | 320(312.7)            | -                | R              | -7 000<br>+6 000 | -210          | 33°14'01.6"N 126°55'08.7"E | -           | RNP APCH                 |                    |

|           |     |        |
|-----------|-----|--------|
| JEJU      | APP | 121.2  |
|           |     | 124.05 |
| JEONGSEOK | TWR | 124.35 |

**VOR RWY 01**

Note : Approach under ICAO Flight Procedures.



Change : Page control.

JEJU/Jeongseok(RKPD)  
VOR RWY 01

## AERONAUTICAL DATA TABULATION

| VOR approach to RWY 01 from TENUL, EGOMI |                                    |                              |
|--|------------------------------------|------------------------------|
| Fix/point                                |                                    | Coordinates                  |
| TENUL (IAF)                              | R 140 JDG/14.00 NM                 | 33°14'01.6"N 126°55'08.7"E   |
| EGOMI (IAF)                              | R 225 JDG/14.00 NM                 | 33°12'24.7"N 126°32'40.7"E   |
| GAPHA(IF)                                | BRG 191.58°/14.00 NM JDG           | 33°09'32.5"N 126°41'39.1"E   |
| D5.0 JDG (FAF)                           | BRG 191.58°/5.00 NM JDG            | 33°18'32.0"N 126°42'26.0"E   |
| D2.5 JDG (MAPT)                          | BRG 191.58°/2.50 NM JDG            | 33°21'01.9"N 126°42'39.0"E   |
| THR RWY01                                | Final approach descent angle 3.30° | 33°22'58.36"N 126°42'41.71"E |
| JDG VOR/DME                              |                                    | 33°23'31.8"N 126°42'52.1"E   |
| D1.5 JDG (MATF)                          | 1.50 NM JDG                        | 33°25'01.7"N 126°42'59.9"E   |
| TENUL (MAHF)                             | R 140 JDG/14.00 NM                 | 33°14'01.6"N 126°55'08.7"E   |